

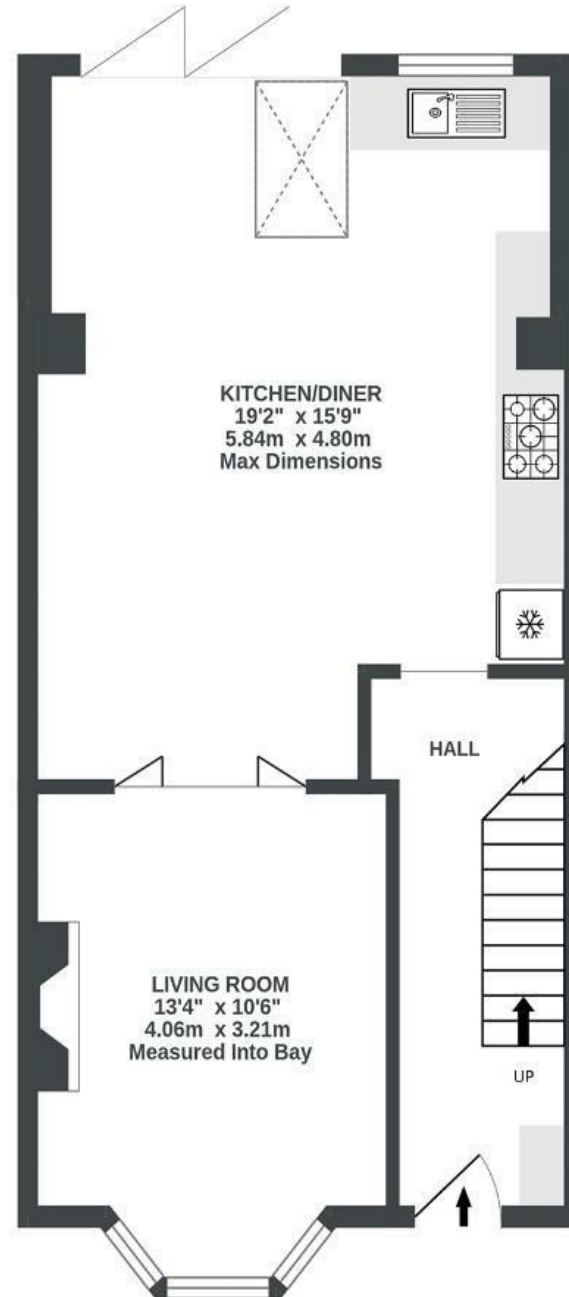
# Downend Park

## HORFIELD

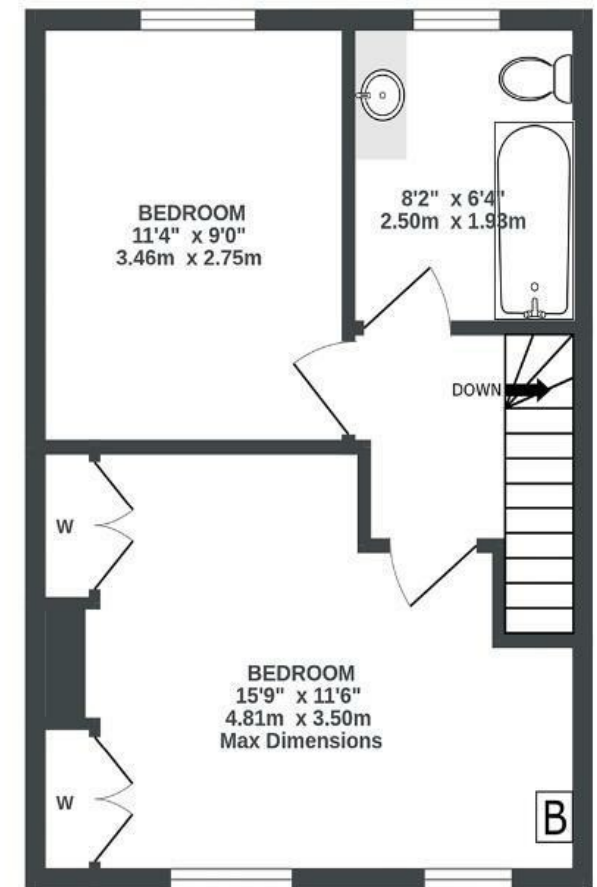
APPROXIMATE FLOOR AREA  
77.4 SQM / 834 SQFT



GROUND FLOOR  
477 sq.ft. (44.3 sq.m.) approx.



1ST FLOOR  
357 sq.ft. (33.1 sq.m.) approx.



Illustrations are for reference purposes only, measurements are approximate, not to scale.

Boardwalk

# Downend Park

HORFIELD, BRISTOL



£450,000



2 Bedrooms



BS7 9PU



1 Bathrooms

*"Downend Park is a special, welcoming community and it's amazing having a park at the end of the street, along with the allotment over the road. Renovating the house was a labour of love and we put a lot of thought into designing inviting, flexible spaces that would satisfy our love of entertaining and our growing family. The morning and evening light through the house is exquisite, we've delighted in cosy evenings by the fire. This has been such a wonderful home. We're going to really miss living here."*

